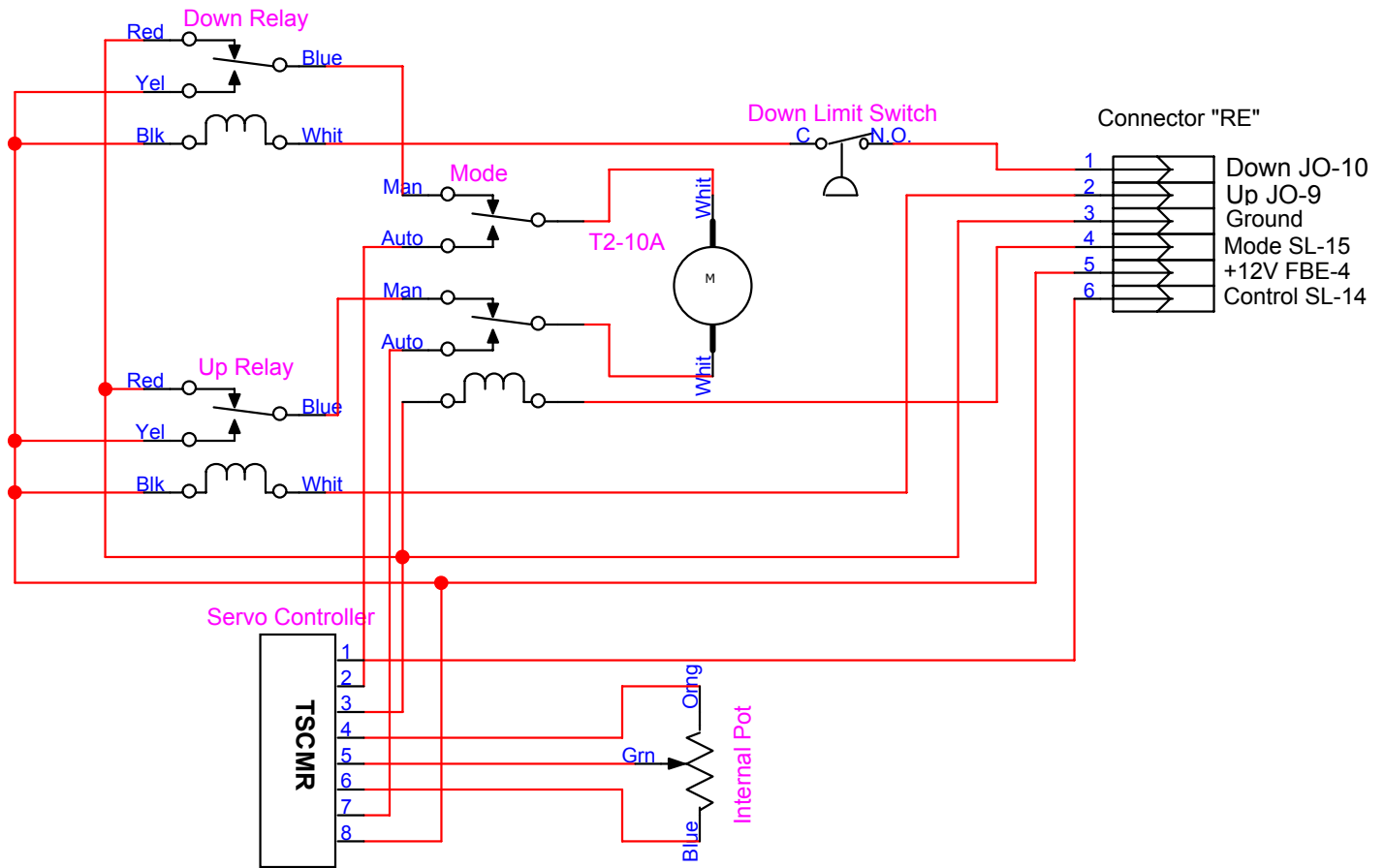


# N75UP Dragonfly Reflexer Wiring

Dave Morris 13 June 2005



### Notes:

1. If 12V is applied to Mode (pin 4), then pin 1 and 2 can be used to manually move the servo up or down, or if Mode pin is floating it will automatically move to the position determined by the voltage applied to Control (pin 6)
2. Joystick UP and DOWN switches (pins 1 & 2) are momentary to ground.
3. The RAC servo has upper and lower limit switches, but the Reflexer design requires an additional Down Limit Switch due to limits on maximum travel in the N75UP construction.
4. All wires are 24 AWG
5. Connector "RE" is 5-pin male Molex at the end of a 24" cable so it can be positioned aft of the pilot's seat.
6. Relays in this installation happen to be Bosch part number 0332209150 automotive fuel pump relays with an 84 Ohm coil (142 mA) with 20/30A contacts, and wire colors indicated on this schematic are those built into the relay socket.